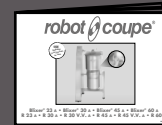


R 23 - R 60 / Blixer® 23 - Blixer 60

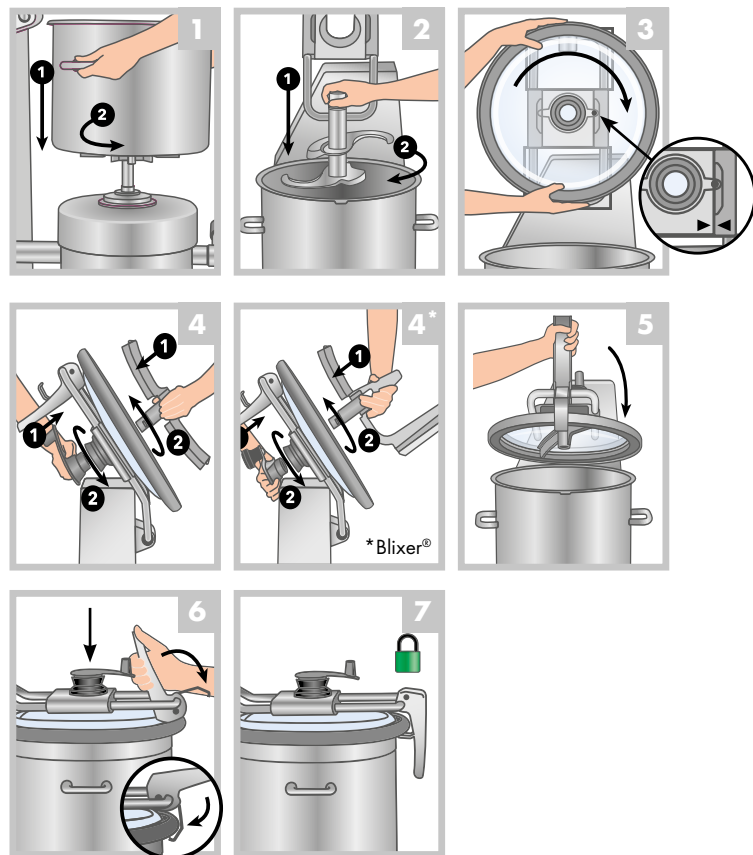
Consignes de sécurité & d'utilisation / Safety & Operating Instructions
Veiligheidsvoorschriften & gebruiksaanwijzing / Sicherheits- & Bedienungshinweise

À FIXER AU MUR.
TO ATTACH TO (FIX ON) THE WALL.
AAN DE WAND TE BEVESTIGEN.
AN DER WAND ZU BEFESTIGEN



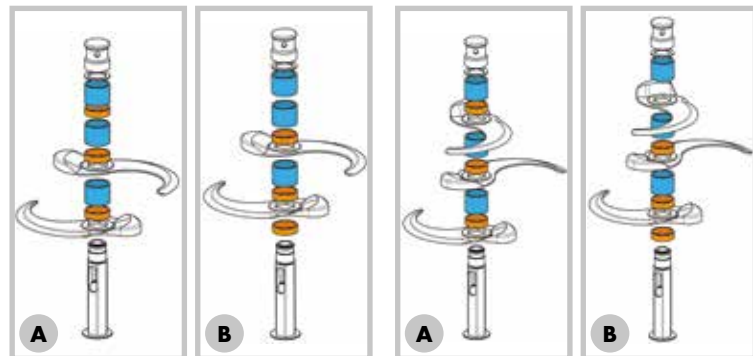
robot coupe®
www.robot-coupe.com

Montage / Assembly Montage / Montage

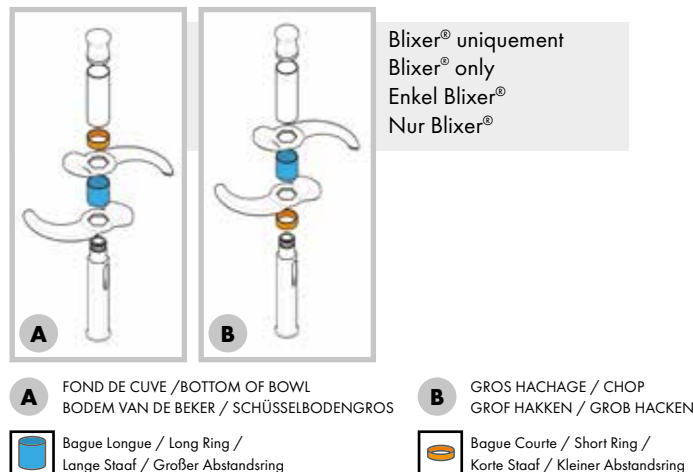


Montage couteau / Blade assembly Montage mes / Montage des Messers

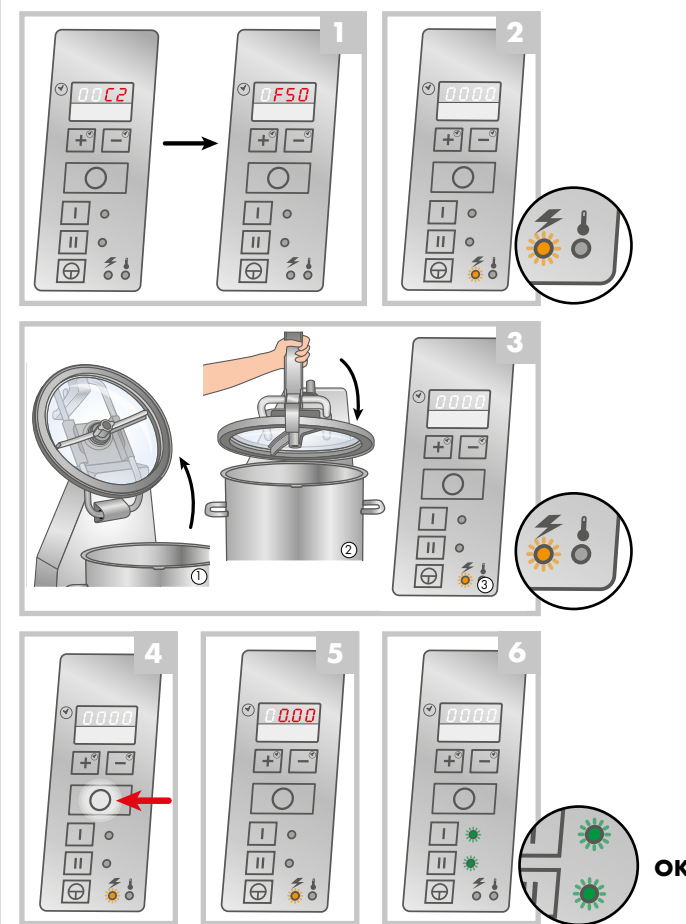
2 Lames / Blades
Bladen / Klingen



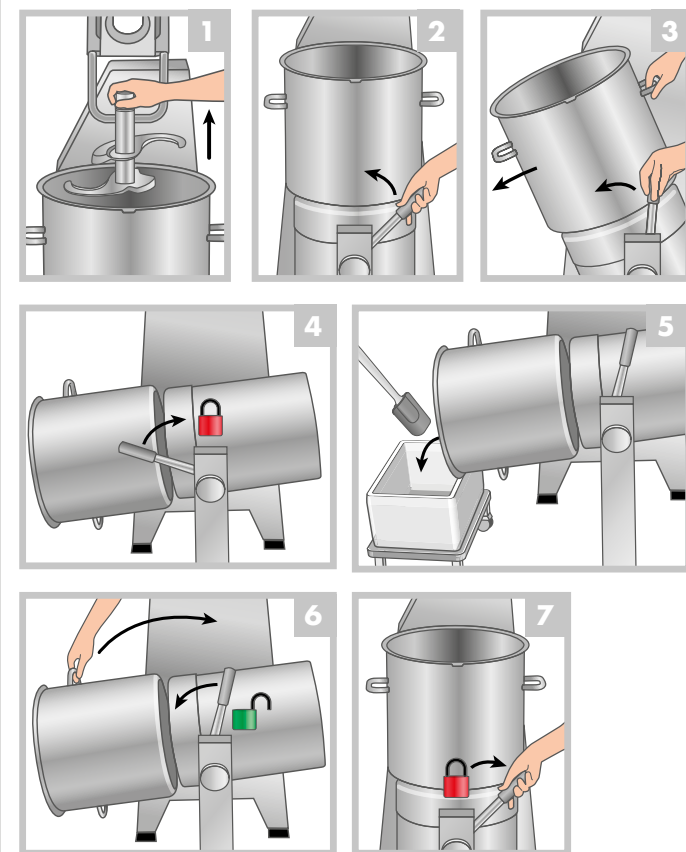
2 Lames / Blades
Bladen / Klingen



Mise en marche et utilisation / Start and operation / Starten en gebruik / Inbetriebnahme und Bedienung

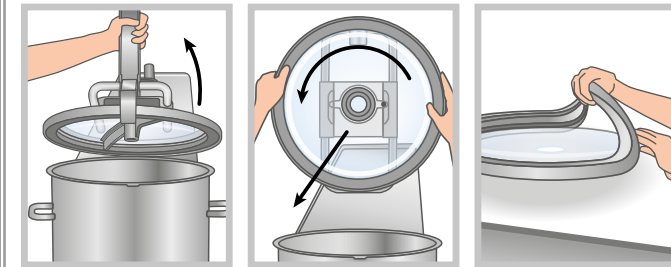


Vidage de cuve / Emptying the bowl / Legen van de beker / Schüsselentleerung

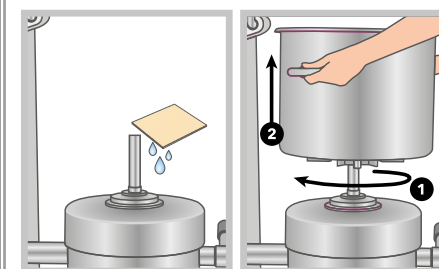


Nettoyage et entretien / Cleaning and maintenance / Reiniging en onderhoud / Reinigung und Wartung

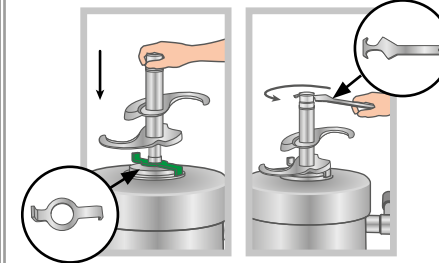
Couvercle / Lid / Deksel / Deckel



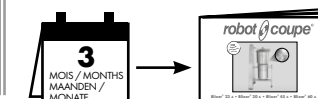
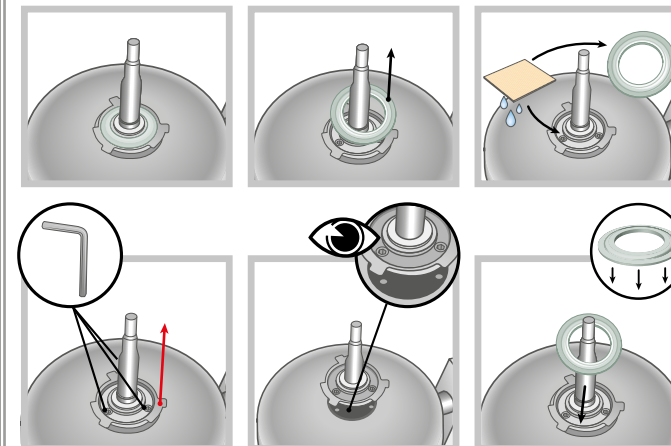
Bloc moteur
Motor
Motorblok
Motorblock



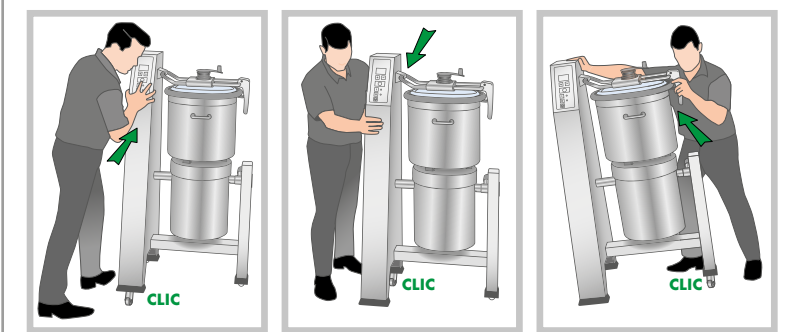
Démontage couteau / Blade removal /
Demontage mes / Demontage des Messers



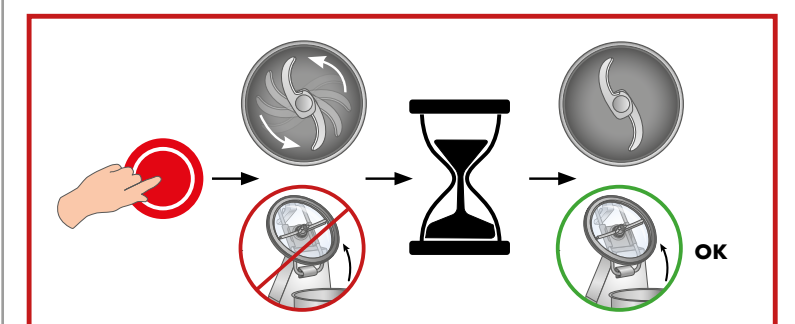
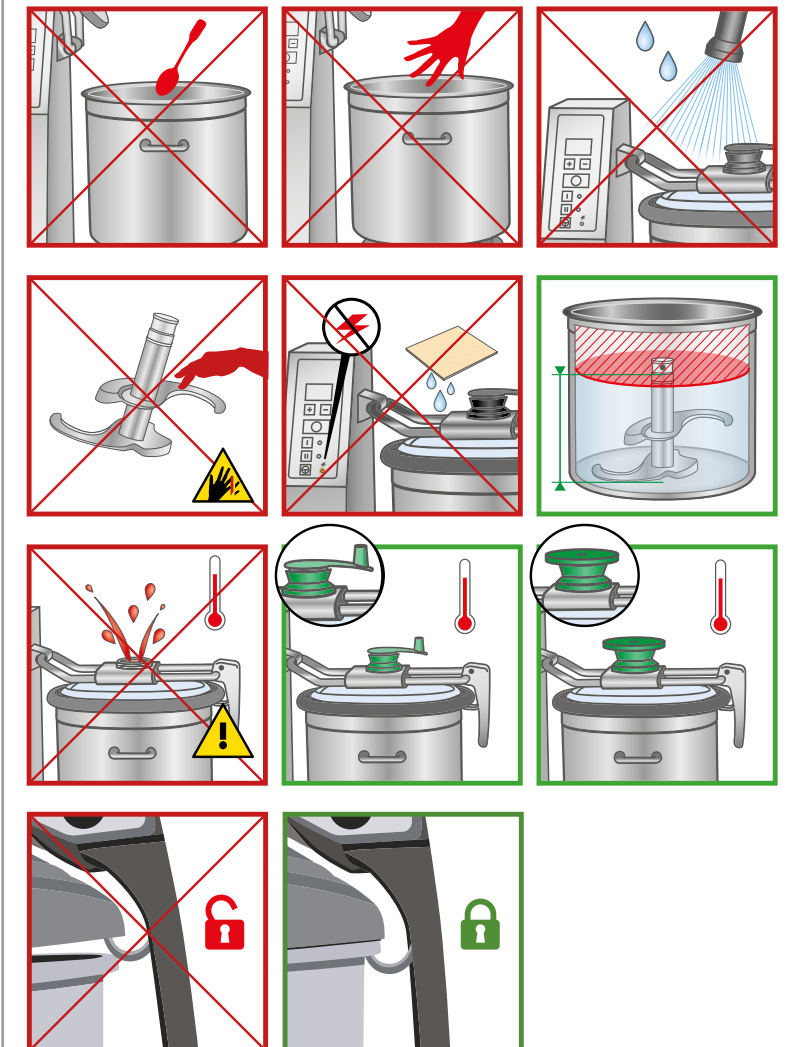
Joint de cuve / Seal / Verbindung beker / Schlüsseldichtung



Fonctionnement des roulettes / Wheel operation / Werking van de rolletjes / Funktionsweise der Räder



Avertissements et sécurité / Safety and Warnings / Waarschuwingen en veiligheid / Warn- und Sicherheitshinweise



Ne jamais essayer de supprimer les systèmes de verrouillage et de sécurité. / Never try to remove the locking and safety systems. / Probeer nooit de vergrendelings- en beveiligingssysteem buiten werking te stellen. / Niemals versuchen, die Verriegelungs- oder Sicherheitsvorrichtungen zu umgehen.

R 23 - R 60 / Blixer® 23 - Blixer 60

Consignas de seguridad y empleo / Instruções de segurança e de utilização

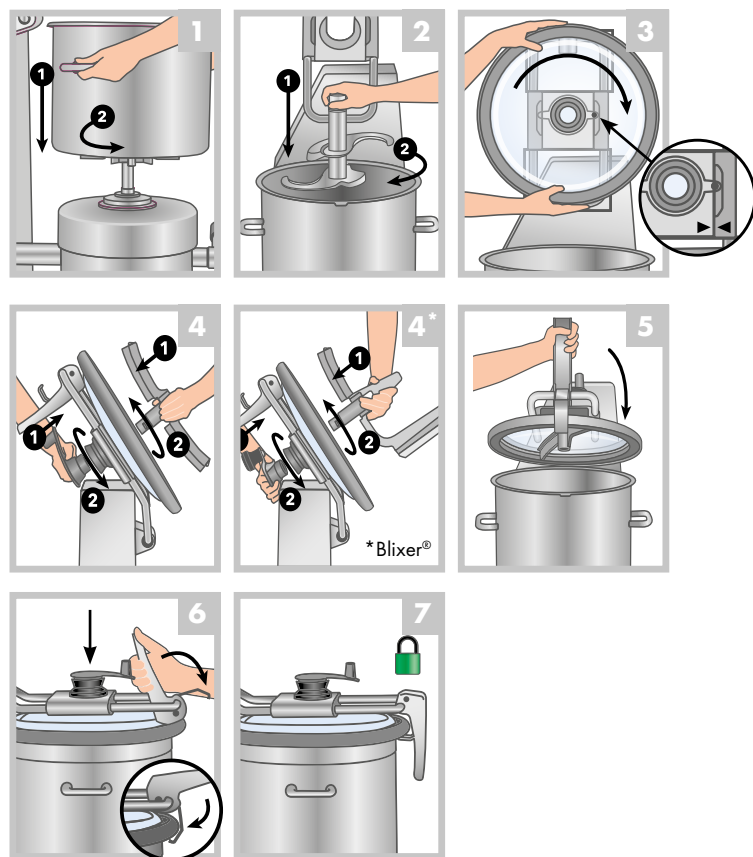
Istruzioni di sicurezza e di utilizzo / Рекомендации по технике безопасности и использованию

**DEBE FIJARSE A LA PARED.
PARA FIXAR NA PAREDE
DA FISSARE A PARETE
ПОВЕСИТЬ НА СТЕНУ**



robot coupe®
www.robot-coupe.com

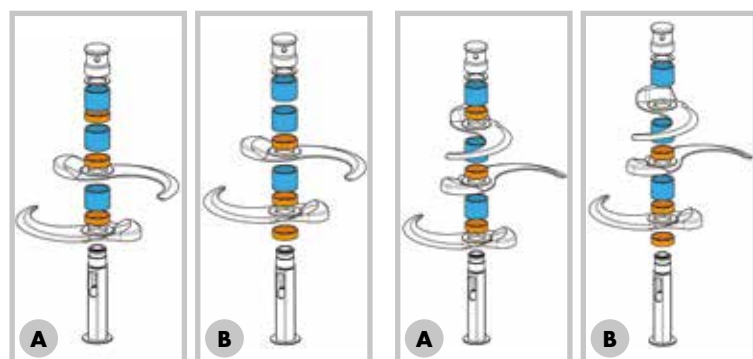
Montaje / Montagem Montaggio / Сборка



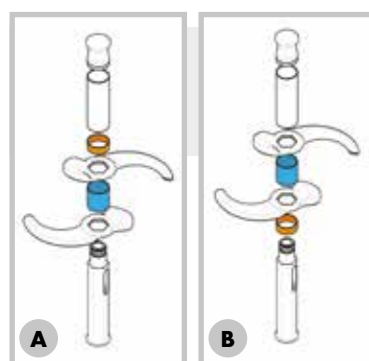
Montaje de la cuchilla / Montagem da faca / Montaggio lama / Сборка ножа

2 Hojas / Lâminas /
Lame / Лезвия

3 Hojas / Lâminas /
Lame / Лезвия



2 Hojas / Lâminas /
Lame / Лезвия



Solo Blixer®
Exclusivamente Blixer®
Solo Blixer®
Только для Blixer®

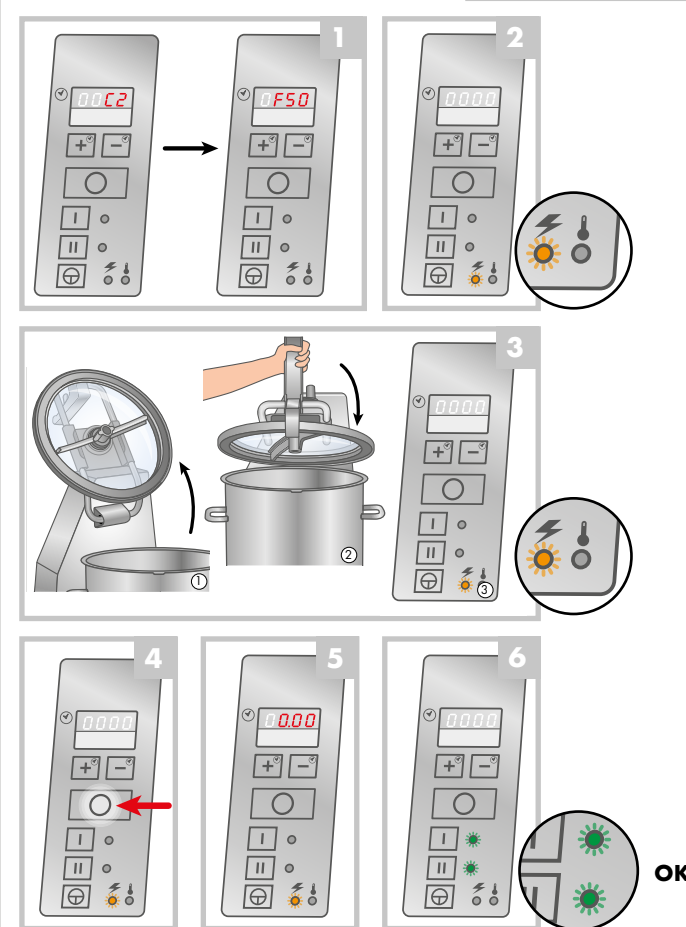
A FONDO DEL RECIPIENTE / FUNDO DA CUBA /
FONDO VASCA / ДНО ЧАШИ

B PICADO DESIGUAL / TRITURAÇÃO GROSSA /
TRITATURA GROSSOLANA / КРУПНАЯ ШИНКОВКА

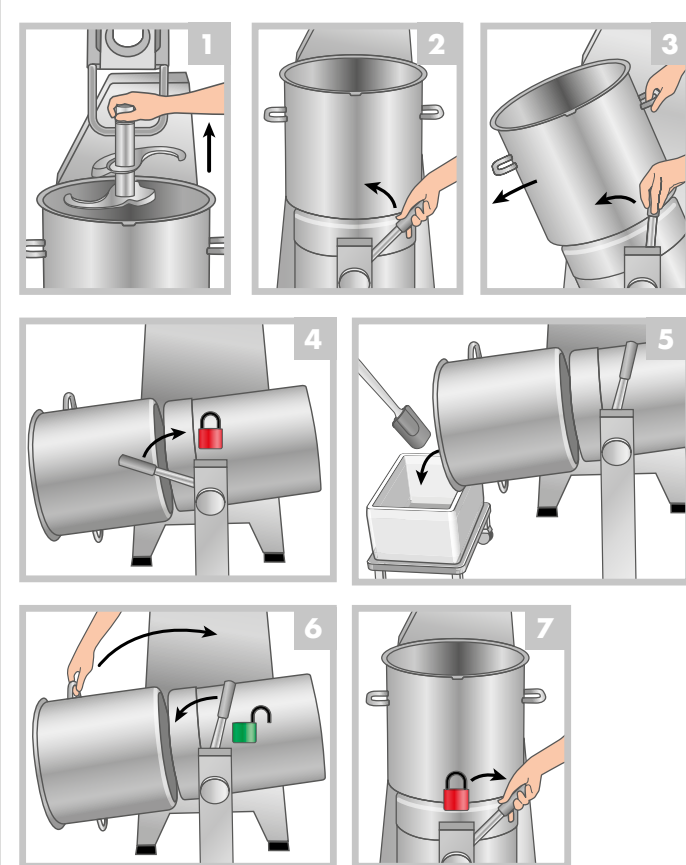
**Anillo Largo / Anel Longo /
Ghiera Lunga / Длинная Втулка**

**Anillo corto / Anel curto /
Ghiera corta / Короткая втулка**

Puesta en marcha y uso Arranque e utilização Accensione e utilizzo Запуск и использование

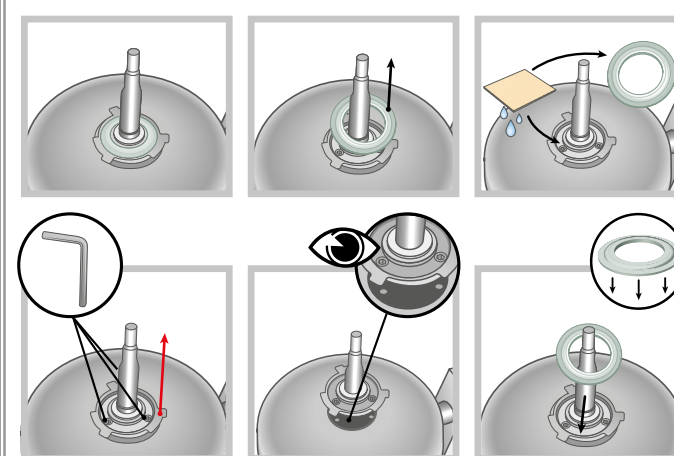
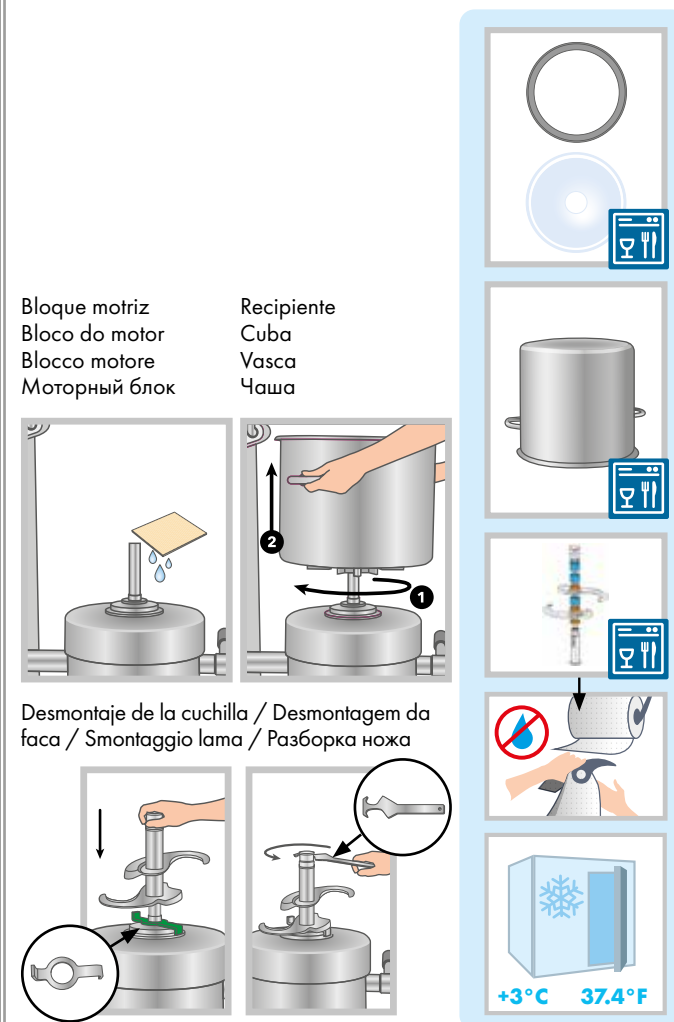
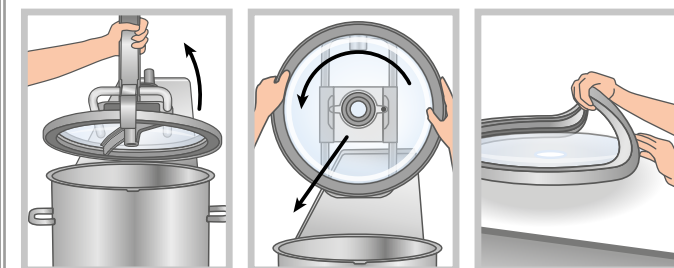


Vaciado del recipiente / Esvaziamento da cuba / Svuotamento vasca / Очистка чаши

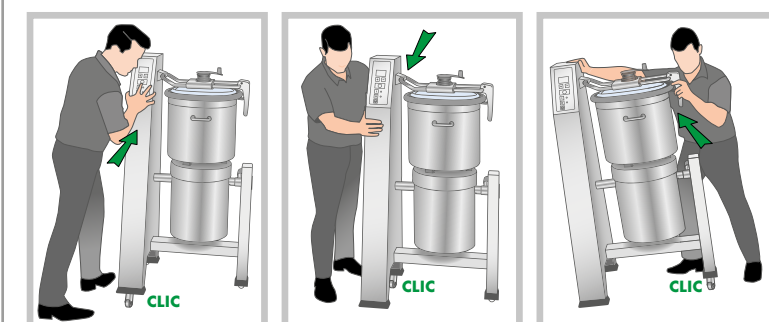


Limpieza y mantenimiento / Limpeza e conservação / Pulizia e manutenzione / Чистка и уход

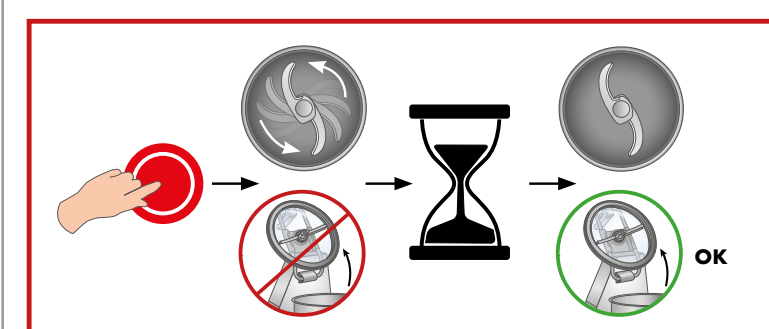
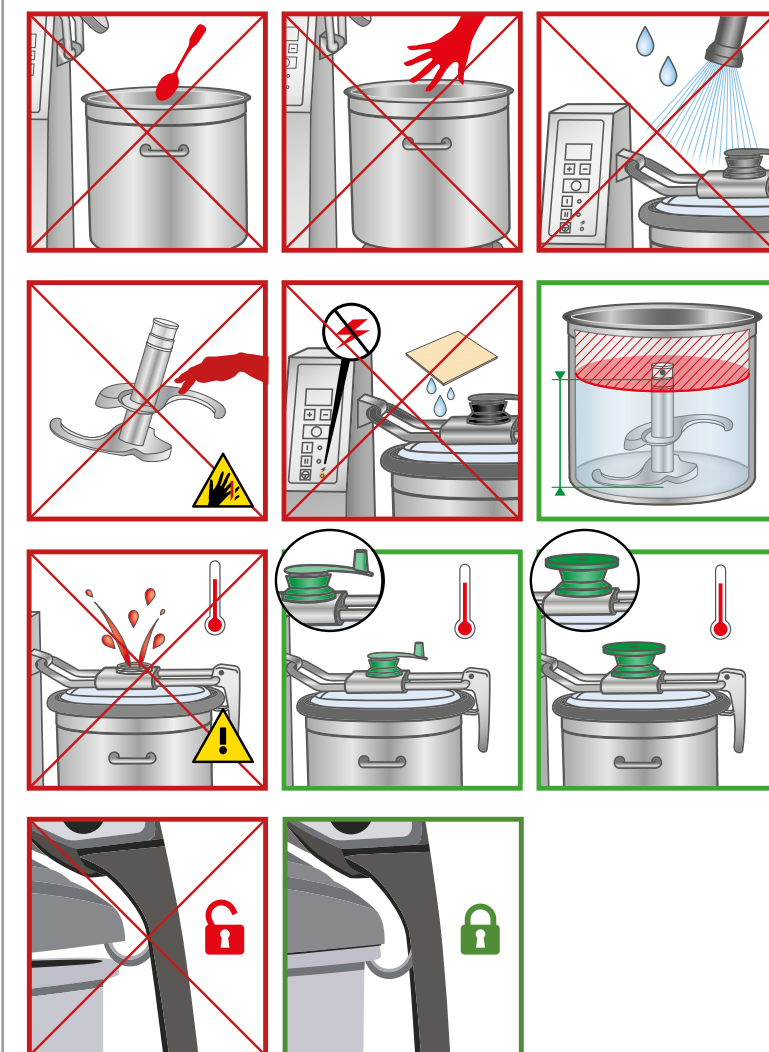
Tapa / Tampa / Coperchio / Крышка



Funcionamiento de las ruedas / Funcionamento dos rodízios Funzionamento delle rotelle / Использование колесиков



Advertencias y seguridad / Avisos e segurança / Avvertenze e sicurezza / Предупреждения по безопасному использованию



**⚠ Nunca trate de desactivar los sistemas de bloqueo y seguridad.
Nunca tentar suprimir os sistemas de bloqueio e segurança.
Non cercare in alcun caso di eliminare i sistemi di blocco e di sicurezza.
Никогда не отключать системы блокировки и защиты.**